

# EXTRAS

## Adventure Playground Echternach

On the left bank of the lake, opposite the Roman villa, there is a lovely adventure playground. You can set off to sea in a pirate ship and keep watch for hostile ships from the tower.



## Gallo-Roman Villa in Echternach

Echternach's Roman Villa was one of the biggest Roman villas north of the Alps. The luxurious house offered impressive comfort to its inhabitants. In the Villa's museum, the daily life of the Romans is depicted using life-size figures. A film about Roman culture and a recreated Roman garden with over 70 plant types await your visit.

Guided tours available on request.

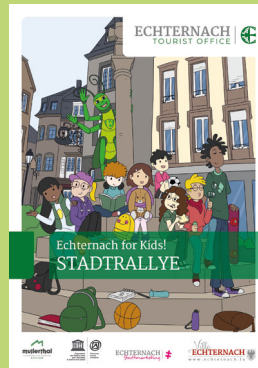
T: +352 47 93 30 214  
[www.villaechternach.lu](http://www.villaechternach.lu)



## Echternach for Kids! Town Trail

Echternach is the oldest town in Luxembourg, and there is plenty to discover here. And that's just what you can do on the Echternach for Kids! Town Trail. As you tour the historic town center, you have to answer a series of tricky questions.

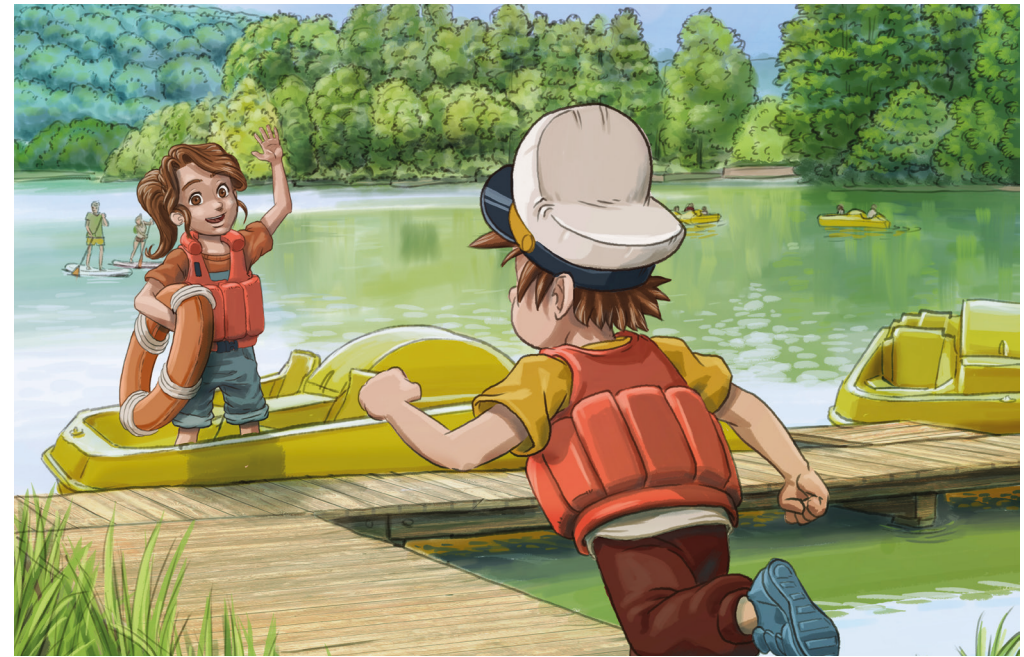
The questionnaire is available from the Echternach Tourist Information Office. Don't throw the questionnaire away at the end of your trail, because with a bit of luck you can win something. Send the completed sheet to the Echternach Tourist Information Office, because great prizes are awarded regularly from amongst all the correct entries. Good Luck!



## Echternach Tourist Office

9-10, Parvis de la Basilique  
L-6486 Echternach  
[www.visitechternach.lu](http://www.visitechternach.lu)

Other tours  
available



# ECHTERNOACHER SÉI in Echternach



## A Walking Trail around the "Echternacher See"

The start is by the Echternacher See (in the large car park). Since this is a circular walk around the lake, you can decide for yourself which direction you want to set off in. We recommend walking counterclockwise, as then you can set off immediately on the Vital Path with its activity points and have a short stop at one of the wooden loungers. You can also go swimming on Adventure Island, hire pedalos and stand-up paddle equipment or try out the trampoline park at Echternach Youth Hostel (open from spring to autumn). At the Roman Villa, you can take a journey back in time to Roman times and or forget the time entirely while playing in the adventure playground.

3,0 km



THE GOVERNMENT  
OF THE GRAND-DUCHY OF LUXEMBOURG  
Ministry of Agriculture, Food and Viticulture

The European Agricultural Fund for Rural Development:  
Europe investing in rural areas

 **Echternach Lake**  
L-6478 Echternach  
[www.mullerthal.lu](http://www.mullerthal.lu)



# Echternach Lake

The Vital Path with  
Play Stations .....  
Walk around the Lake ———

- 1 Bikepark
- 2 Adventure Island
- 3 Bathing
- 4 Pedal Boat & Standup Paddling
- 5 Trampoline Park
- 6 Roman Villa
- 7 Adventure Playground



## The Vital Path at the “Echternacher See”

At the entrance to Echternach there is a large, man-made lake covering approximately 30 hectares. It offers plenty of opportunities for spending a fantastic afternoon here. Riding a pedalo, paddle-boarding, trampolining, or simply playing in the play area. The area around the lake also has the Roman Villa with its museum, a bike park, and several BBQ spots. The youth hostel has a small restaurant with a terrace.

And then there's the *Vital Path*, with its various play and activity points. Here, you can jump, swing, balance, rock and climb. You can explore the activity points together with other children and adults, and learn from one another.

